

2025-26 Focus Topics

What Counts as A “Yes”? (WCAAY?)

Ramkumar Jayagopalan, M.D.

Medical Director

Quality through Technology and Innovation in Pediatrics (QTIP)
South Carolina Department of Health and Human Services (SCDHHS)

Aug. 9, 2025

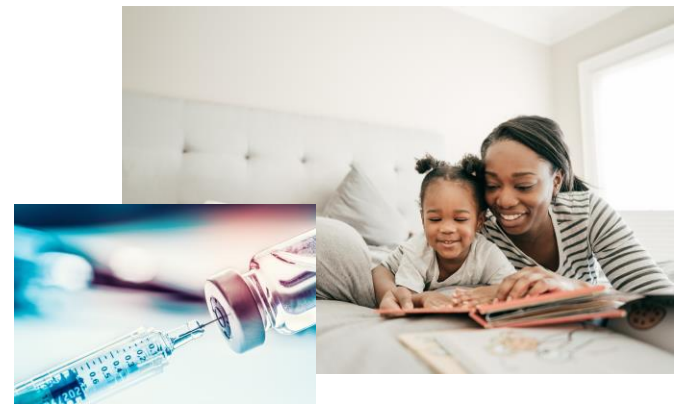
2025-26 Focus Table

Topic 1: Developmental Screening / Autism (Ages 0 to 3)			
Subtopics and Quality Improvement Data Aggregator (QIDA) Focus			Workshop (Fall)
<ul style="list-style-type: none"> Immunizations Well Child Visits (WCV) completions Screenings <ul style="list-style-type: none"> Developmental (what kind, if positive – referral Y/N) Autism (primary/secondary screener used, if positive – referral Y/N) 	<ul style="list-style-type: none"> Mother/child dyad <ul style="list-style-type: none"> Breastfeeding Safe sleep Social determinants of health (SDOH) screening Postpartum depression screening 		<ul style="list-style-type: none"> Autism BabyNet
Topic 2: Adolescent Health and Risk Screening (Ages 11+)			
Subtopics and QIDA Focus			Workshop (Spring)
<ul style="list-style-type: none"> WCV completions Screenings <ul style="list-style-type: none"> Mental health <ul style="list-style-type: none"> Anxiety Depression Suicide 	<ul style="list-style-type: none"> Substance use (what screener used, pos/neg. managed in office vs. referral <ul style="list-style-type: none"> HIV Chlamydia 	<ul style="list-style-type: none"> Transitioning to primary care Immunizations <ul style="list-style-type: none"> Combo 2 HPV 	<ul style="list-style-type: none"> TBD

Developmental and Autism Screening

Developmental and Autism Screening

- **Well-child visits**
- **Immunization**
 - **Combo 10:** four diphtheria, tetanus and acellular pertussis (DTaP); three polio (IPV); one measles, mumps and rubella (MMR); three haemophilus influenza type B (HiB); three hepatitis B (HepB), one chicken pox (VZV); four pneumococcal conjugate (PCV); one hepatitis A (HepA); two or three rotavirus (RV); and two influenza (flu) vaccines by their second birthday)
- **Fourth trimester**
 - Breastfeeding
 - Safe sleep
 - SDOH screening
 - Postpartum depression screening



Developmental and Autism Screening *(cont.)*

- **Developmental Screening**

- **American Academy of Pediatrics (AAP) and Bright Futures** recommend:

- Screening with a validated developmental screening tool at 9 months, 18 months and 30 months
 - PEDS, Ages and Stages Questionnaire (ASQ), Survey of Well-being of Young Children (SWYC)
 - Anytime the developmental surveillance raises concern
 - Anytime a parent raises concern

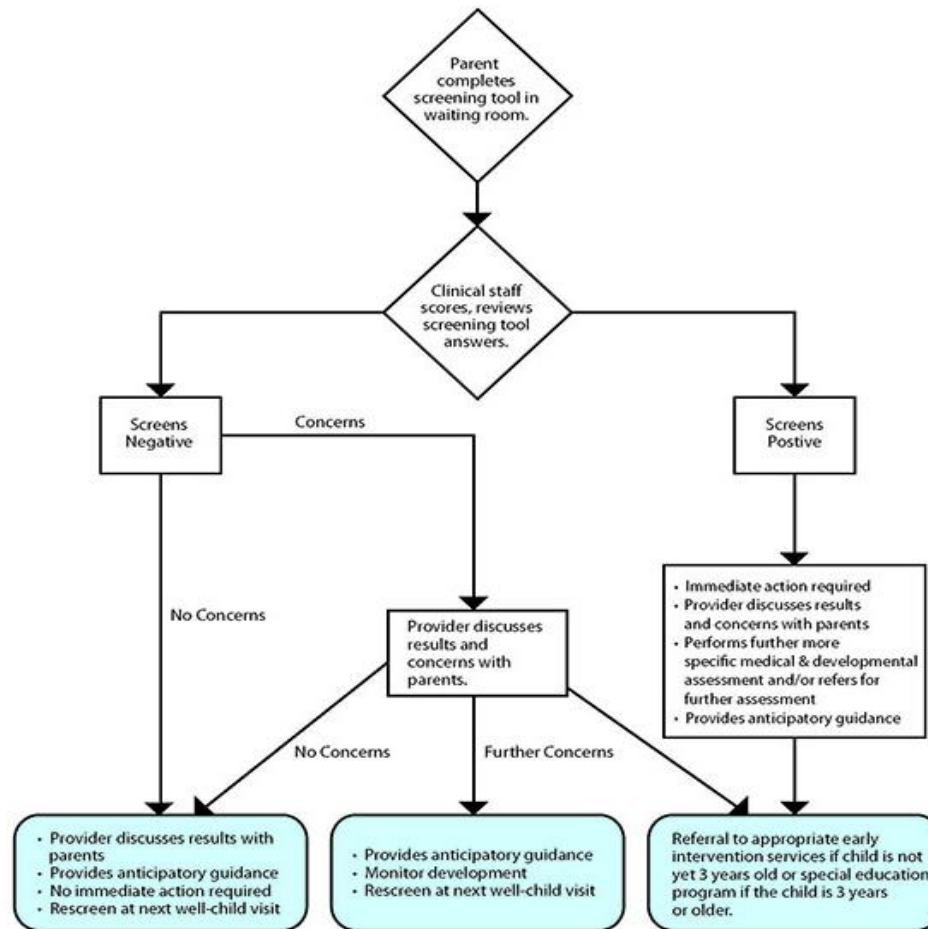
- **Autism Screening**

- **AAP and Bright Futures** recommend:

- Screening with a validated tool at 18 and 24 months
 - Modified Checklist for Autism in Toddlers, Revised (MCHAT-R), SWYC, Screening Tool for Autism in Toddlers and Young Children (STAT)
 - Anytime the developmental surveillance raises concern
 - Parents raise concerns

Developmental and Autism Screening (cont.)

Pediatric Developmental Screening Flowchart



Source: <https://www.cdc.gov/autism/hcp/diagnosis/screening.html>



QIDA Questions and WCAAY?

Developmental and Autism Screening: QIDA Questions

1. **Is the patient up-to-date on well-child visits?**
 - a. Yes
 - b. No
2. **Is the patient up to date on immunizations?**
 - a. Yes
 - b. No
3. **Is there documentation in the medical record that the infant was ever breastfed?**
 - a. Yes
 - b. No
4. **Is there documentation in the medical record that safe sleep was discussed?**
 - a. Yes
 - b. No
5. **Is there documentation in the medical record that the mother was screened for postpartum depression?**
 - a. Yes
 - i. If positive, was a referral made?
 1. Yes
 2. no
 - b. No
6. **Is there documentation in the medical record of a standardized screening for SDOH?**
 - a. Yes
 - b. No



Developmental and Autism Screening: QIDA Questions

7. Is there documentation in the medical record of a standardized screen for development?

- a) Yes
 - i. What screener was used?
 - 1. PEDS
 - 2. ASQ
 - 3. SWYC
 - 4. Open
 - ii. If positive, was a referral made?
 - 1. Yes
 - 2. No
- b) No
- c) N/A

WCAAY:

Any documentation in the medical records that a standardized developmental screening has been completed.



WCAAY:

Any documentation in the medical records that a plan is in place, or a referral was made.



Developmental and Autism Screening: WCAAY?

8. Is there a standardized screen for autism in the medical record?

a. Yes

i. What kind? (select all that apply)

1. MCHAT
2. STAT
3. RITA-T
4. POSI (on SWYC)
5. open

ii. If positive, was a referral made?

1. Yes
2. No



- WCAAY? : Documentation in the records that a standardized autism screening has been completed.



WCAAY? :

Any documentation in the medical records that a plan is in place, or a referral was made.



Developmental and Autism Screening: QI Inspiration

Developmental Screening/Autism QI Ideas



Well Visits/Immunizations

- **Utilize a reminder system:**
 - Automated text message or phone call reminders
 - Birthday postcard campaign with reminders for well visits.
- **Anticipatory guidance** delivery at well-child visits to inform parents importance of their next visit
- **Review vaccine records** at every visit to ensure up-to-date information on immunization status
- **In office education:** posters, bulletin boards, handouts and magazines educating parents on immunizations and schedule.
- **Clinic schedules**-look into extending hours or offering weekend hours to help working parents with bringing their children in
- **Patient + Staff Education**
 - Training on how to **address vaccine hesitancy** with families
 - Parent education on **importance of visits and vaccines**

Safe Sleep

- Staff education on safe sleep practices
- Distribute educational materials to families
- Consistent documentation of conversations on safe sleep
- Documentation of Safe Sleep book distribution
- Follow-up protocols for families displaying high risk behaviors
- Implement newborn bag

Breastfeeding

- **Designate a space** in your clinic for breastfeeding
- **Coordination of lactation support** within your practice
- Identify a **designated place to document breastfeeding status** of patients in your EMR
 - **Consistency is key!**
- **Patient education** materials on breastfeeding importance and resources for extra support
- **Connect with MCO** for breastfeeding services and supplies (breast pumps)

SDOH

- Implement a **standardized screening tool**
- **Create a process/pathway to refer and track positive screens**
 - Referral coordinator process
 - Integrate SDOH data into your EHR
- Develop and update a **resource list of SDOH support** in your community
- **Educate front desk staff** on types of screeners and office referral protocols

Postpartum Depression

- **Display posters** in exam rooms and office to educate on 4th trimester warning signs and complications
 - PPD warning signs handouts
 - H.E.A.R. Her campaign materials
 - Mom's IMPACTT
- **Staff education** on signs of PPD and how to screen for it
- **Follow-up protocols**
 - Implement referral process to OB for PPD support
 - Discussions with mom about social support and social isolation
 - Create an updated resource list to help support moms

Developmental Screening

- Implement or update your **developmental screener**
 - Consider adding the **screening data into your EMR**
 - Use a **digital version** of your screening tool
 - Educate providers on cut-off and indicator scores
- **Explore standardized screen for autism**
 - Implement RITA-T as a secondary screener for autism
 - Create/designate **screener friendly office space**
 - Provide **updates to billing office**
- **Document and track screening rates** of patients at the recommended ages-timeliness
- **Educate physicians, clinicians and front desk staff on:**
 - **Appropriate referral process**
 - **Resources available to families**
 - Compile an **interdisciplinary resource list** of local and statewide options for families
- **Update internal referral workflow**
 - Utilize **BabyNet Fast Track program**
 - Create a **process map** for addressing positive screens
 - Clarify what referrals go to which source
 - Streamline follow-up process
- **Distribute educational materials** for patients' care givers and families
 - Address **cultural and linguistic barriers**
- Identify **local community resources** for families



Developmental and Autism Screening: ICD Codes

HEDIS Combo 10 – Immunizations (by age 2)

Vaccine	CPT Codes	ICD-10 Code	Requirement
DTaP (4 doses)	90696, 90697, 90700, 90721, 90723	Z23	4 doses by 2nd birthday
IPV (3 doses)	90698, 90713	Z23	3 doses
MMR (1 dose)	90707, 90708	Z23	1 dose after first birthday
Hib (3 doses)	90645, 90646, 90647	Z23	3 doses
HepB (3 doses)	90744, 90747	Z23	Birth dose + 2 more
VZV (1 dose)	90716	Z23	1 dose after first birthday
PCV (4 doses)	90670	Z23	4 doses
Rotavirus (2–3 doses)	90681, 90682	Z23	2 or 3 doses depending on product
HepA (1 dose)	90633	Z23	1 dose after first birthday
Influenza (2 doses)	90688, 90689, 90691, 90694	Z23	2 doses between 6 months and 2 years
Vaccine Admin Codes	90460, 90461 (with counseling); 90471–90474 (no counseling)	Z23	Use when reporting administration
HCPCS Codes	G0009 (Pneumococcal), G0010 (HepB)	Z23	Medicare/Medicaid billing

Mother/Child Dyad Health Topics

Subtopic	Description	Relevant Codes
Breastfeeding Support	Guidance and support for breastfeeding practices.	S9443 (Lactation classes - HCPCS), Z39.1 (Follow-up for breastfeeding)
Safe Sleep Education	Promotes infant sleep safety to reduce risk of SIDS.	ICD-10: Z13.89 (Other screening), ICD-10: Z71.89 (Other specified counseling)
Relational Health (Mental Health)	Focus on bonding and emotional well-being.	CPT: 99401–99404 (Preventive counseling), Z63.5 (Disruption in family)
SDOH Screening	Evaluates social risk factors impacting health (housing, food, etc.)	ICD-10 Z codes: Z55–Z65 , CPT: 96160 (Health risk assessment)
Postpartum Depression Screening	Screening mothers for depression following childbirth.	CPT: 96127 (Behavioral assessment), ICD-10: Z13.89

Infant Preventive Care & Screening Overview (0–36 Months)

Category	Description	CPT Codes	ICD-10 Codes
Developmental Screening	Identifies delays in cognitive, emotional, or physical development.	96110, 96112	Z00.129, Z00.121
Autism Screening	Screens for autism spectrum disorders.	96110	F84.0, F84.1, F84.5



Billing & Procedure Codes

Well-Child Care (WCC) Completions		
Visit Type	CPT Codes	ICD-10 Codes
Infant (under 1 year)	99391	Z00.129, Z00.121
Child (1–4 years)	99392	Z00.129, Z00.121



Adolescent Health: Ages 11+

Adolescent Health: Ages 11+

- **Well-child visits**
- **Immunizations**
 - One dose of Tetanus, Diphtheria, Pertussis (Tdap) vaccine, one dose of Meningococcal (ACWY) vaccine and completed the HPV vaccine series by their 13th birthday or on track to do it.
- **Mental health screenings**
 - **Annual screening for**
 - Depression (PHQ-2, PHQ-9, PSC-35)
 - Anxiety (GAD-7, SCARED, PSC-35)
 - Suicidal ideation (PHQ-9, PHQ-A, ASQ)
 - Or when a concern is raised by the patient/family

Adolescent Health: Ages 11+ *(cont.)*

- **Sexual health screenings**

- **Sexually transmitted infection screenings**

- Annual screening for Chlamydia/ Gonorrhea if sexually active.
- HEDIS measure - 16 and older sexually active females - annual Chlamydia screening.
- HIV screening recommended at least one time between ages 16 and 18 and annually if high risk.



Adolescent Health: Ages 11+ *(cont.)*

- **Substance use screening**
 - **The AAP recommends pediatricians:**
 - Increase their capacity in substance use detection, assessment and intervention
 - Become familiar with adolescent Screening, Brief Intervention and Referral to Treatment (SBIRT) practices and their potential to be incorporated into universal screening and comprehensive care of adolescents in the medical home



Adolescent Health: Ages 11+ (cont.)

SIX CORE ELEMENTS™ APPROACH AND TIMELINE FOR YOUTH TRANSITIONING FROM PEDIATRIC TO ADULT HEALTH CARE



Source: Cooley WC, Sagerman PJ et al. *Supporting the Health Care Transition From Adolescence to Adulthood in the Medical Home. Pediatrics* 128 (2011) 182-203.

Sarah Mennito, MD, MSCR

Medical University of South Carolina

Professor, Departments of Pediatrics and Internal Medicine

Program Director, MUSC Medicine/Pediatrics Residency

QIDA Questions and WCAAY?

Adolescent Health: QIDA Questions

1. Did the patient have a well-child visit in the past 12 months?

- a. Yes
- b. No



2. Is the patient up to date on Combo 2 vaccinations? (Tdap and meningococcal vaccine)

- a. Yes
- b. No



3. Is the patient up to date on HPV vaccination?

- a. Yes
- b. No



Adolescent Health: QIDA Questions *(cont.)*

4. Was the patient screened for chlamydia?

- a. Yes
- b. No
- c. n/a



5. Was the patient screened for HIV?

- a. Yes
- b. No
- c. n/a



Adolescent Health: QIDA Questions *(cont.)*

6. Was the patient screened for anxiety within the past 12 months?
 - a. Yes
 - b. No
7. Was the patient screened for depression within the past 12 months?
 - a. Yes
 - b. No
8. Was the patient screened for suicide risk within the past 12 months?
 - a. Yes
 - b. No

Adolescent Health: QIDA Questions + WCAAY

Was the patient screened for substance abuse within the past 12 months?

a. Yes

b. No

c. Which primary screener was used?

i. CRAFFT

ii. CRAFFT 2.1+N

iii. S2BI

iv. Open

d. Positive or negative?

i. Positive

ii. Managed in office or referral?

a. In office

b. Referral

WCAAY: Patients must have documentation they were screened for substance abuse within the last 12 months.

WCAAY: Patient must have documentation they were screened for substance abuse using one of the above screeners.

WCCAY: Patient must have documentation they have a positive screen for substance abuse.

WCCAY: Patients must have documentation they have a positive substance abuse screen, and it was managed either in office or a referral was made.

Adolescent Health: QIDA Questions + WCAAY *(cont.)*

10. Has this patient had a conversation about the transition to adult primary care (ages 14+)?

- a. Yes
- b. No
- c. n/a

WCAAY: Patients must have documentation transition to adult primary care was discussed.



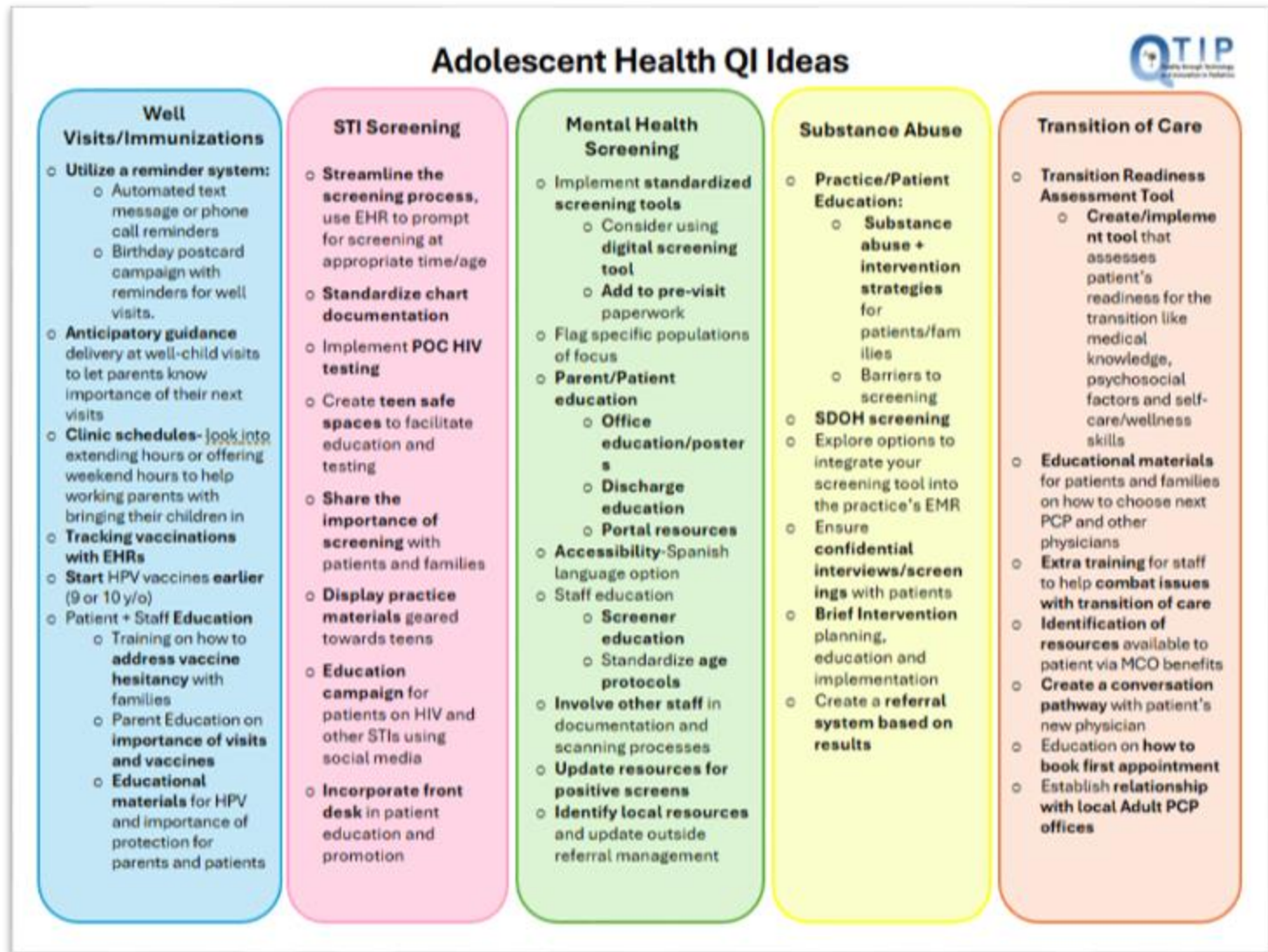
11. Has the patient identified an adult primary care provider? (ages 17+)?

- a. Yes
- b. No
- c. n/a

WCAAY: Patients must have documentation they have identified a new adult primary care provider they plan to transition their care to.



Adolescent Health 11+: QI Inspiration



Adolescent Health 11+: ICD Codes

Billing & Procedure Codes



Category	ICD-10 Codes	CPT Codes	HCPCS Codes
Mental Health Screening			
Depression	F32.9 (Depressive disorder)	96127 (Brief emotional/behavioral assessment)	G0444 (Depression screening)
Anxiety	F41.1 (Generalized anxiety disorder)	96127 (Brief emotional/behavioral assessment)	
	F41.9 (Anxiety disorder, unspecified)	96160 (Health risk assessment, adolescent)	
ADHD	F90.9 (ADHD, unspecified type)	96161 (Health risk assessment, adolescent with family)	
Behavioral Health			
Depression	F32.9 (Depressive disorder)	96127 (Brief emotional/behavioral assessment)	
Substance Use		96160 (Health risk assessment, adolescent)	
Procedures			
Anxiety	F41.1 (Generalized anxiety disorder)	96127 (Brief emotional/behavioral assessment)	
	F41.9 (Anxiety disorder, unspecified)	96160 (Health risk assessment, adolescent)	
Counseling			
Immunizations			
	Z23 (Encounter for immunization)	90460 (Immunization administration with counseling)	G0008 (Influenza vaccine administration)
	Z28.3 (Under immunization status)	90651 (HPV vaccine, 3-dose series)	G0009 (Pneumococcal vaccine administration)
		90633 (HPV vaccine, 9-valent)	
		90715 (Tdap vaccine)	
Preventive Care			
	Z00.121 (Routine exam with abnormal findings)	99384 (Preventive care, new patient, 12-17 years)	
	Z00.129 (Routine exam without abnormal findings)	99385 (Preventive care, new patient, 18-39 years)	
		99394 (Preventive care, established patient, 12-17 years)	
Chlamydia Screening in Women (CHL)		87110, 87270, 87320, 87490-2, 87810	



QIDA Reminders

Cycle	Month for Chart Data	QIDA Data Entry Deadline
1	July 2025	Aug. 31, 2025
2	August 2025	Sept. 15, 2025
3	September 2025	Oct. 15, 2025
4	October 2025	Nov. 15, 2025
5	November 2025	Dec. 15, 2025
6	December 2025	Jan. 15, 2026
7	January 2026	Feb. 15, 2026
8	February 2026	March 15, 2026
9	March 2026	April 15, 2026
10	April 2026	May 15, 2026
11	May 2026	June 15, 2026
12	June 2026	July 15, 2026



FYI

Cycle 1 is due Aug. 31.

Review the questions as a team.

If you cannot pull requested charts, let us know ASAP so we can work together to find the best course of action.

The QIDA excel sheet will be sent via email with a copy of questions on Monday, Aug. 11.

Questions and Discussion

